

"Serena"

2003 ANGEL - by Thea Dueck

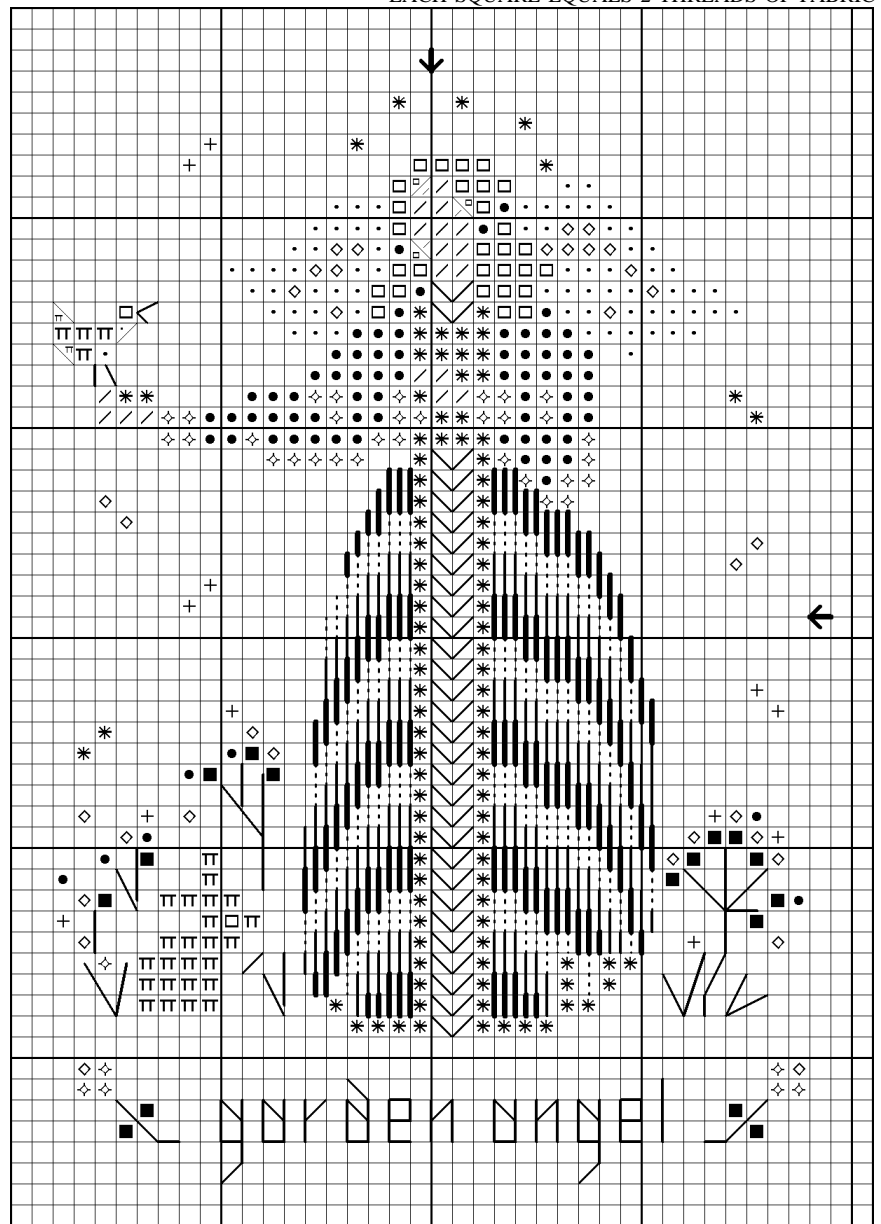
Enjoy stitching our newest addition to the Christmas Angels. Serena is dressed in soft rose and blush Victorian robes, with an elegant Bargello skirt. She has dark hair and is gently holding some grain in her hand for the birds.. while she takes care of the garden. When you stitch her for yourself, stitch her as is, or change her hair colour, her sleeves, the Knit Stitches, her wings, her Bargello skirt, the words, or whatever you choose... Our VS staff have had fun with their version. Let's see how yours turns out!! - Thea

Design area: 52h x 36w (3.7" x 2.5")

Cut fabric: 28ct Zweigart Olive Green or Antique White
Cashel Linen 6.5" X 5"

Symbols Materials

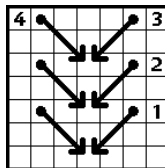
	DMC Perle Cotton #8 white
*	Kreinik #4 Braid #102 - vatican gold
.	DMC Floss - white
/	DMC Floss #754 - peach flesh lt
◇	DMC Floss #223 - shell pink med dk
●	DMC Floss #224 - shell pink med
◇	DMC Floss #225 - shell pink lt
■	DMC Floss #520 - fern green dk
π	DMC Floss #645 - beaver grey dk
□	DMC Floss #3371 - black brown
+	DMC Floss #676 old gold lt
—	DMC Floss #223 shell pink med dk
.....	Gentle Art - Highland Heather
—	DMC Floss #224 shell pink med



INSTRUCTIONS:

1. CROSS STITCH: Work all Cross Stitches with 2 strands of DMC Floss, or 1 strand of Kreinik #4 Braid #102 vatican gold following symbols on Main Chart.

2. CHEVRON LAPEL: Using 1 strand of DMC #8 Perle Cotton white work Knit Stitch as shown in diagram.



3. BACKSTITCHING: Using 1 strand of each, backstitch as follows: stems, and lettering with DMC Floss 520 fern green dk, bird beak and bird legs with DMC Floss 3371 black brown.

3. BARGELLO SKIRT: The first and top row sets the pattern of Satin Stitches over 4 horizontal fabric threads. (Every three rows the colours repeat). The first and top row of the skirt is Satin Stitched with 2 strands of DMC Floss #223 shell pink med dk. The next row below is stitched using 2 strands of Gentle Art "Highland Heather". The third row of Satin Stitches is worked with 2 strands of DMC Floss #224 shell pink med. When you run out of room at the bottom of the skirt, compensate the satin stitches, by making each stitch only as long as you have room for. *You can change fibers and colours here and enjoy your own creativity. Try a different look using 4 repeats or 2 repeats.*

	DMC Floss #223 shell pink med dk (2 strands)
	Gentle Art "Highland Heather" (2 strands)
	DMC Floss #224 shell pink med (2 strands)

FINISHING SUGGESTIONS: Ornament: cut two pieces of matboard about 1/8" larger than stitched design. Glue quilt batting on each, let dry and trim. Center the design over batting and anchor with straight pins. Clip curving corners, glue raw edges on back. Repeat on other matboard using a fabric of your choice. Glue both pieces wrong sides together. Glue cording around outside edges to finish off. **Frame:** use 3"x 4" opening.

"2003 Serena"
©Copyright 2003 Thea Dueck
The Victoria Sampler
Phone (250) 656-3566
Fax (250) 656-0447
Email:Info@victoriasampler.com
Website:http://www.victoriasampler.com

The
Victoria
SAMPLER