

"Love Blooms"

What a perfect little needleroll pattern.. Elegantly simple, in beautiful colours to enhance your collection! Wendy Causer is one of our Victoria Sampler family, and she's designed this beautiful FREE needleroll for you this month! Wendy's also created a beautiful sampler called "Spring Morning" which she also teaches as a Cyberclass. We're just delighted with both patterns, and hope you are too! This design would be charming as the front of a small gift bag, on the front of a small photo album, a little spring pillow, framed, turned into the needleroll you see in the photos.

Design area: 40w x 63h (3" wide x 4.5" high")

Model: 28ct Antique White Cashel: Cut fabric: 8"wide x 11" high"

Symbols and Materials:

- DMC #8 Perle Cotton - white
- DMC #12 Perle Cotton - white
- DMC Floss #ecru - ecru
- >> DMC Floss #502 - blue green
- DMC Floss #503 - blue green med
- * Thread Gatherers SNC #0992 - "My Heart's Garden"
- Mill Hill Seed Bead #2004 - pink
- Mill Hill Petite Bead #40557 - gold

INSTRUCTIONS:

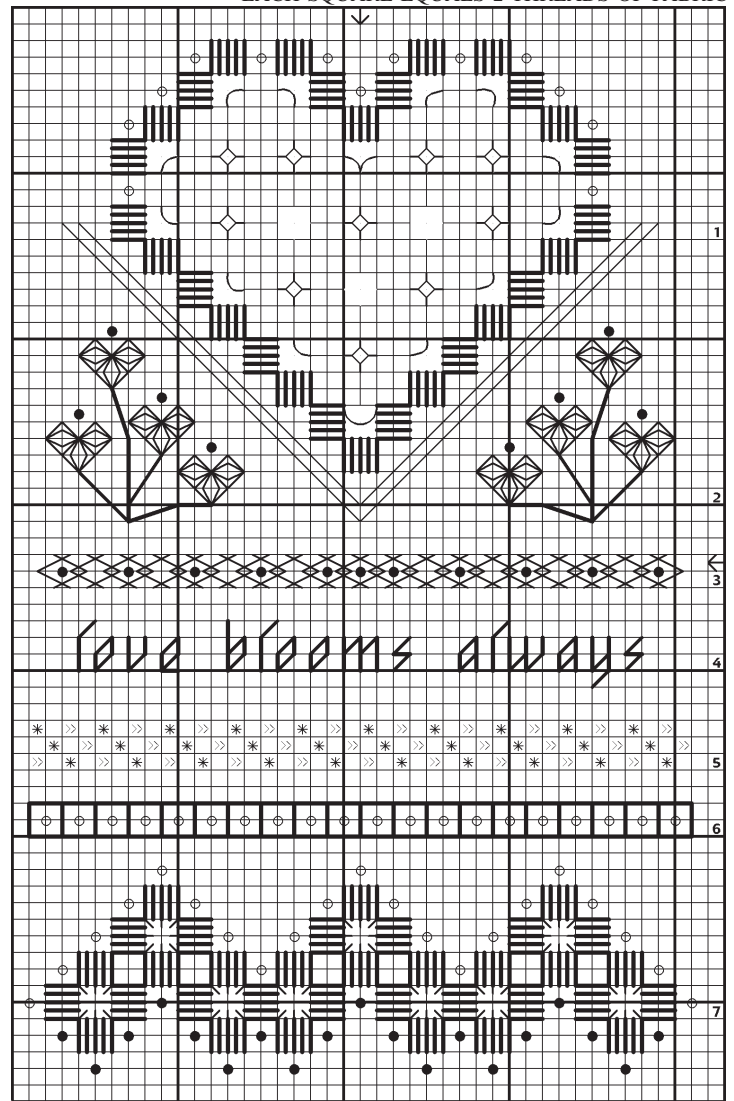
1. HARDANGER HEART: Work Kloster Blocks using 1 strand of DMC #8 Perle Cotton white. Cut appropriate fabric threads shown as dotted lines on diagram. **Diagram A.** Remove cut threads. Using 1 strand of DMC #12 Perle Cotton white weave bars and work Dove's Eyes in the centre of the heart, **Diagram B.** and work Buttonhole bars around the outside of heart. **Diagram C.** Using 1 strand of DMC #12 Perle Cotton white work Cable Stitch from left to right. Pull tightly. **Diagram D.** Attach Mill Hill seed bead #02004 pink according to symbols on Main Chart using 1 strand of DMC Floss #ecru. Go through each bead twice for stability. *There are **no** unworked fabric threads between this band and the next.*

2. QUEEN STITCH FLOWERS: Work Queen Stitch flowers using 1 strand of Thread Gatherer Silk 'n Colors #0992 'My Heart's Garden'. **Diagram E.** The bottom Queen Stitch is worked vertically and the two top Queen Stitches are worked horizontally. **Diagram F.** Using 1 strand of DMC Floss #503 blue green med Backstitch stems. Attach Mill Hill petite bead #40557 gold as shown on Main Chart using 1 strand of DMC Floss #ecru. Go through each bead twice for stability. *There are **four** unworked fabric threads between this band and the next.*

3. HERRINGBONE: Use 2 strands of Thread Gatherer Silk 'n Colors #0992 "My Heart's Garden" to work two rows of Herringbone stitches. Work the top row from left to right and the bottom row from right to left. **Diagram G.** Attach Mill Hill petite beads #40557 gold in the centre of the two Herringbone rows as shown on Main Chart. Go through each bead twice for stability. *There are **four** unworked fabric threads between this band and the next.*

4. LETTERING: Backstitch lettering as shown on Main Chart using 1 strand of DMC Floss #502 blue green. *There are **four** unworked fabric threads between this band and the next.*

5. MOSAIC STITCH: Following symbols on Main Chart work three rows of Mosaic Stitches from left to right. Starting with the top row use 2 strands of Thread Gatherer Silk 'n Colors #0992 "My Heart's Garden" to work the first and every other Mosaic Stitch. Work the second and every other Mosaic Stitch using 2 strands of DMC Floss #502 blue green. **Diagram H.** *There are **four** unworked fabric threads between this band and the next.*



MAIN CHART

COPYRIGHT © WENDY CAUSER 2004

6. FOUR-SIDED STITCH WITH BEADS: Use 1 strand of DMC Floss #ecru to attach Mill Hill seed bead #02004 pink as shown on Main Chart. Work Four-Sided Stitch from right to left using 1 strand of DMC #12 Perle Cotton white. Pull tightly. **Diagram I.** *There are **three** unworked fabric threads between this band and the next.*

7. KLOSTER BLOCKS, ALGERIAN EYELETS AND BEADS: Satin Stitch Kloster blocks using 1 strand of DMC #8 Perle Cotton white. Using 2 strands of Thread Gatherer Silk 'n Colors #0992 "My Heart's Garden" work Algerian Eyelets between Kloster Blocks. Pull tightly to open the centre eye. **Diagram J.** Attach beads according to symbols on Main Chart using 1 strand of DMC Floss #ecru.

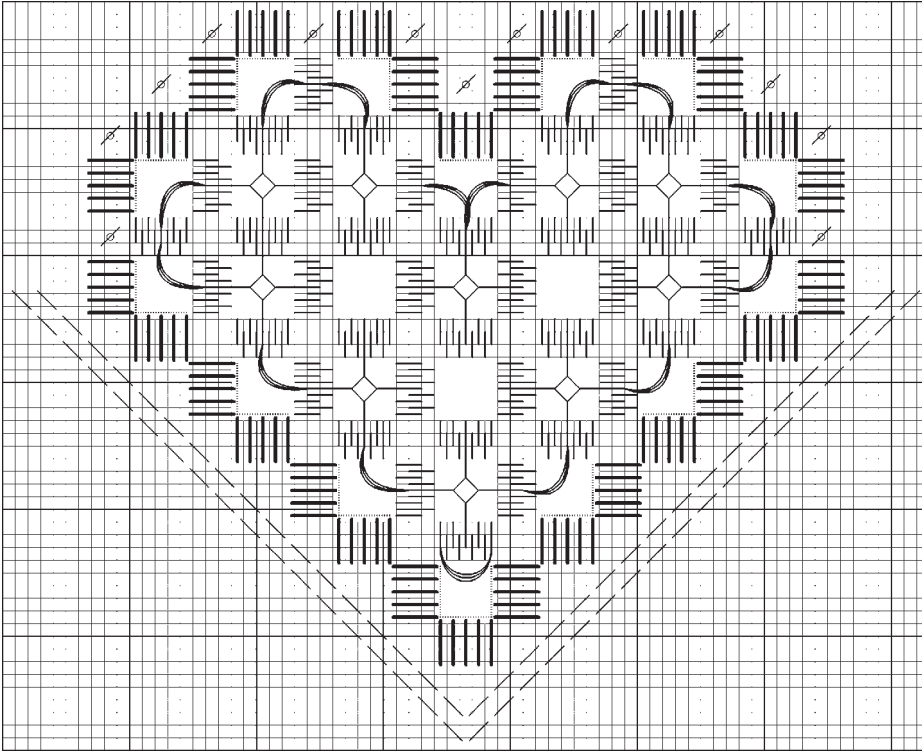
NEEDLEROLL FINISHING: Count up over 25 fabric threads from the top of the stitching and remove the next four fabric threads. This is where you will thread the ribbon through later. From the centre of the removed threads measure out 3" work 14 Nun's Stitches along the side of where the fabric threads have been removed around the corner and then 84 Nun's Stitches along the top and then 14 Nun's Stitches to the withdrawn threads. **Diagram K.** Repeat for the bottom. Cut away the excess fabric. The fabric should now measure approx. 6" x 8.5". Zig Zag edge to prevent unravelling. Line the hardanger area with contrasting fabric and then light-weight iron-on interfacing for stability. Fold fabric in half and using a sewing machine, place right sides together, and sew a seam down the side, using a 1/2" seam allowance. Turn right-side out. Stuff your needleroll with batting. Finally, starting at center front, thread over and under every 4 fabric threads, weave ribbon of choice through area of withdrawn fabric threads, gather, and tie into a bow.

"Love Blooms Needleroll"
©Copyright 2004 Wendy Causer
The Victoria Sampler
Phone (250) 656-3566
Fax (250) 656-0447
info@victoriasampler.com
www.victoriasampler.com

The
Victoria
SAMPLER

Stitch Diagrams

COME UP AT THE DOT AND GO DOWN AT THE ARROW



Diagrams A. Hardanger Heart

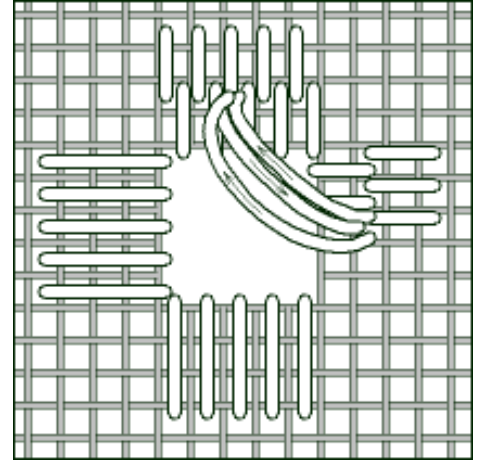
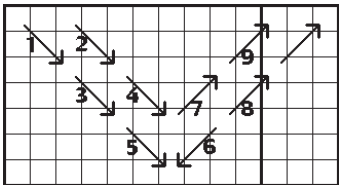


Diagram C. Buttonhole Bars



Diagrams D. Cable Stitch

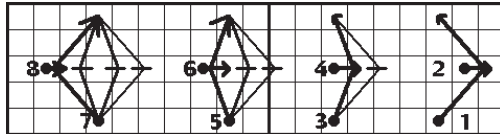


Diagram E. Queen Stitch

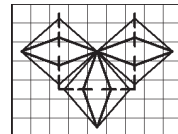


Diagram F. Queen Stitch Flower

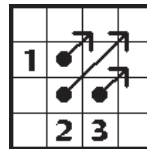


Diagram H. Mosaic Stitch

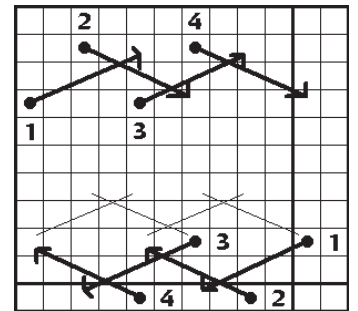
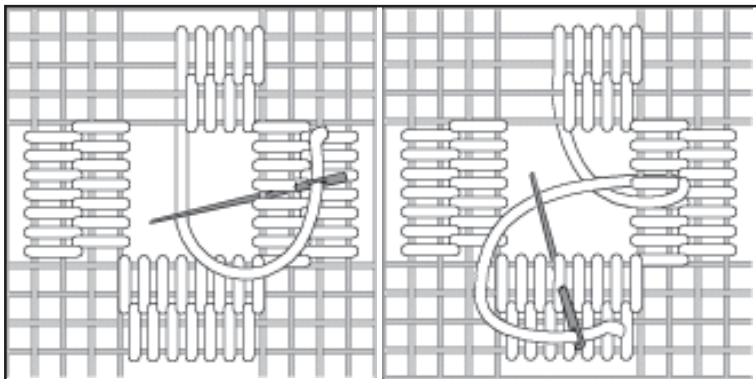


Diagram G. Herrinbone Stitch



Diagrams B. Woven Bars with Dove's Eye

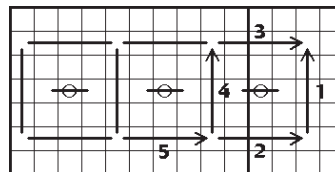


Diagram I. Four-Sided Stitch

Diagram J. Algerian Eyelets

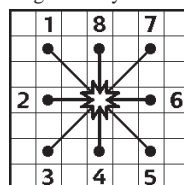


Diagram K. Nun's Stitches

