

Jazz Tuffet Pincushion

Designed by Thea Dueck
of the Victoria Sampler

This design is derived from the New Orleans 'Jazz' sampler. Enjoy creating this Tuffet for yourselves! - Thea

Design area: 54h x 54w (3.85" x 3.85")
Model: 28ct Light Sand Cashel Linen
(cut 7" X 7" for pincushion)

INSTRUCTIONS:

1. CROSS STITCH BORDER: Using 2 strands of Dinky Dyes #124 "Freo" Cross Stitch according to symbols on Main Chart.

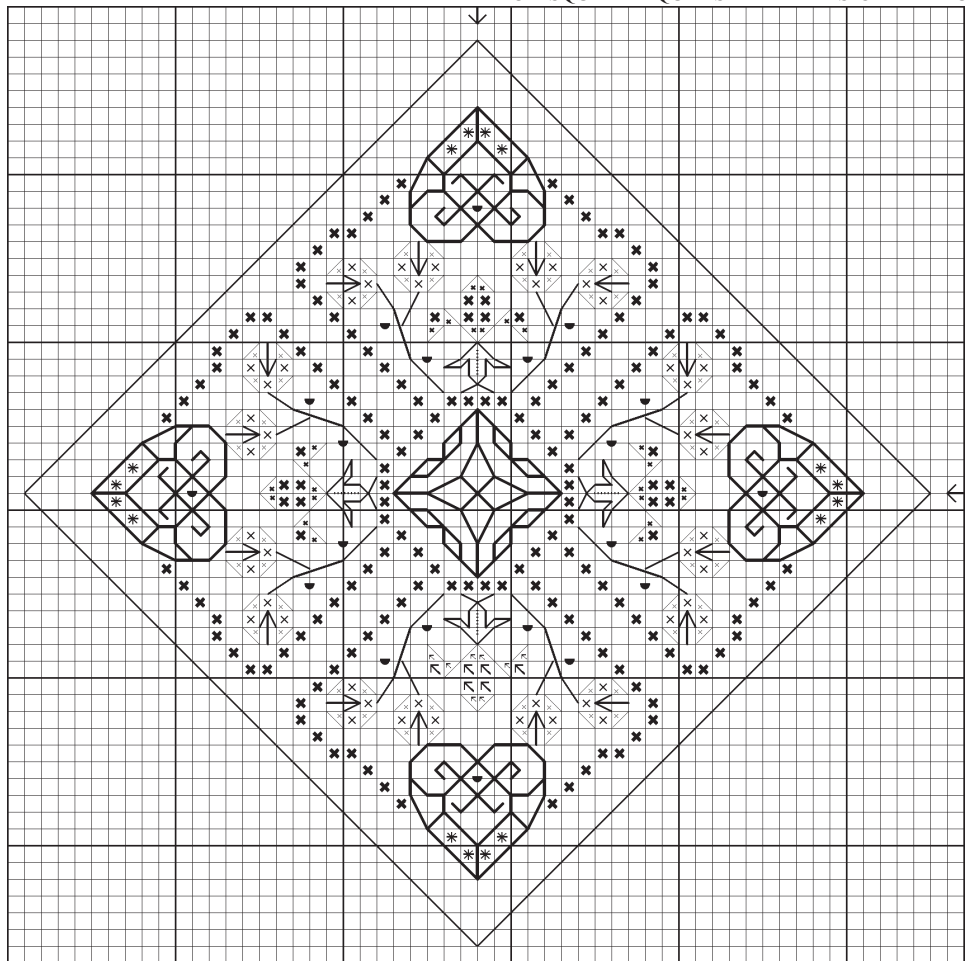
2. FLEUR-DE-LIS AND LILIES: Cross Stitch with 2 strands of silk floss, according to symbols on Main Chart. Using 1 strand of Kreinik Mori #4167 green dk Backstitch flower stems and the bottom of the Fleur-de-lis. Straight Stitch the bottom of the Fleur-de-lis with 2 strands of Kreinik Mori #4167 green dk. Using 1 strand of Needlepoint Inc. #0694 gold Straight Stitch the stamens on the lilies. Attach Mill Hill petite beads #40557 gold with 1 strand of Kreinik Mori #8000 white, according to symbols on Main Chart. Go through each bead twice to ensure stability.

3. BLACKWORK HEARTS: Using 1 strand of Kreinik Mori #8050 black Backstitch the corner hearts and the centre. Cross Stitch with 1 strand of Rainbow Gallery Treasure Braid petite #PB02 "Artic Gold", according to symbols on Main Chart. Using 1 strand of Kreinik Mori #8000 white attach Mill Hill petite beads #40557 gold, as shown on Main Chart. Go through each bead twice to ensure stability.

Symbols Fibres and Beads

- ✕ Dinky Dyes #124 "Freo" - gold, purple, turquoise, green
- * Rainbow Gallery Treasure Braid Petite #PB02 "Artic Gold"
- ↖ Kreinik Mori #3063 - salmon
- Kreinik Mori #4167 - green dk
- ✕ Kreinik Mori #8000 - white
- Kreinik Mori #8050 - black
- Needlepoint Inc. #0694 - gold
- Mill Hill petite beads #40557 - gold
- Access Mother of Pearl stars
- #24 tapestry needle
- #10 beading needle

EACH SQUARE EQUALS 2 THREADS OF FABRIC



MAIN CHART

COPYRIGHT © THEA DUECK 2007

FINISHING: *Front:* Backstitch around the outside of design area with 1 strand of DMC #12 Perle Cotton white, shown on Main Chart as a solid line. *Back:* Using 1 strand of DMC #12 Perle Cotton white Backstitch the border around the outside. Trim both the front and back piece of tuffet 1/2" away from Backstitched border around the outside. Zig zag raw edges. Using contrasting sewing thread make a small marking stitch at centers of each of four sides of each piece, (or mark with fabric pen). Using the Backstitched borders as guides, fold over and finger press the raw edges to the wrong sides. Using 1 strand of DMC #12 Perle Cotton white, overcast the edges together along the Backstitched borders without piercing the fabric. The idea is to match a corner of one of the pieces, with a center mark at a side of the other. Start by coming out through one of the corners of the front piece and go down through the center of one of the sides of the back piece. Overcast until you come to the corner of the back piece where it meets the center of the front piece. Continue with this sequence until you get to the last section. Stuff the tuffet tightly with polyester fiber fill and continue overcasting the edges carefully. Using 2 strands of Kreinik Mori #8000 white and a #9 Straw/Milliners needle attach a Mother of Pearl star bead in the center of both the front and back of tuffet. Pull tightly after each go through making a small indentation in the centre. - Lisa

THEA'S DESIGNS AND ACCESSORY PACKS FROM THE VICTORIA SAMPLER WHOLESALE ORDERS ONLY: 1-888-658-3566

"Jazz" Sampler
©Copyright 2007 Thea Dueck
The Victoria Sampler
Phone (250) 656-3566
Fax (250) 656-0447
Email: Info@victoriasampler.com
Website: http://www.victoriasampler.com

The
Victoria
SAMPLER