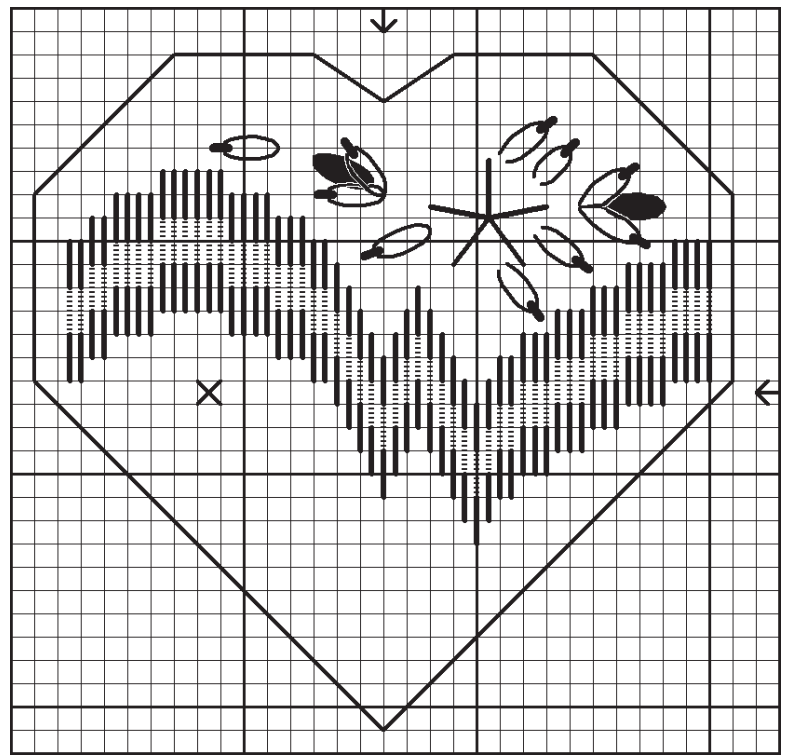


Cupid Heart ORNAMENT

Cupid Heart - Simple Bargello stitching, silk ribbon and a shiny cupid charm, this sweet little heart can be made into a brooch or a pendant... give to a stitching friend, use it as a pincushion, hang it from your Christmas Tree, or... wear your heart on your sleeve! This pattern can be finished in many different colours and with many different fibers. You may wish to finish the entire block of bargello in multicoloured thread such as Waterlilies, Watercolors or Overdyed perle cotton or floss, and change the silk ribbon colours to match. Work a red, green and gold combination on white Cashel Linen for Christmas.... or a pink and blue one for a new baby.... Thea

Symbols Materials

Caron Waterlilies #045 "Flame" - red, purple
 Kreinik #4 Braid #002 - metallic gold
 Gloriana 4mm silk ribbon #091 "Raspberry Parfait"
 Charm Cupid - antique gold
 #24 tapestry needle



MAIN CHART

COPYRIGHT © THEA DUECK 2007

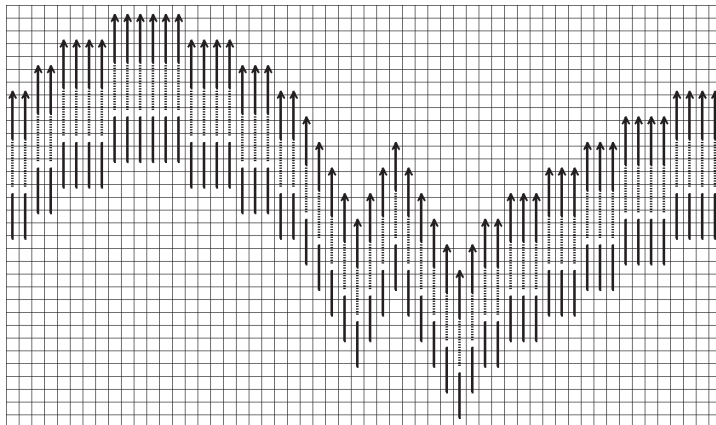
To prevent unraveling of the fabric, whipstitch or hem raw edges. A roller frame is recommended to prevent distortion and handling of the fabric. Each of the specialty stitches, including backstitch, can be started with a waste knot as follows: Make a knot at the end of the thread, and push threaded needle through the front of the fabric near the whipstitched edge. Come up at the appropriate spot and begin stitching. Later cut the knot from the front of the fabric, pull the tail to the back and carefully weave through stitches already in place. Give yourself plenty of thread!

Design area: 29h x 30w (2" x 2")

Cut fabric: 28ct Raw Linen Cashel (6" X 6" for ornament)

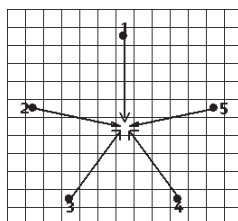
INSTRUCTIONS:

1. BARGELLO WAVE: Satin Stitch the top and bottom row of the Bargello wave from left to right over four fabric threads with 2 strands

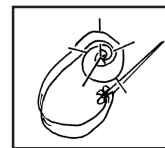


of Caron Waterlilies #045 "Flame". Using 2 strands of Kreinik #4 Braid #002 metallic gold, Satin Stitch the middle row over four fabric threads. **Note:** Work the top row first.

2. SPIDER WEB ROSE: Using 2 strands of Caron Waterlilies #045 "Flame" work the star shaped base or "web" of the rose. This is the first step needed for the Spider Web Rose. There are five Straight Stitches to the web. Each Straight Stitch is worked from the outside into the centre. **Note:** Be sure to stretch the thread taut against the fabric.

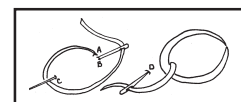
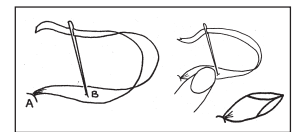


Now using 1 18" length of Gloriana 4mm silk ribbon #091 "Raspberry Parfait" come up near the center of the base, and begin weaving the ribbon over and under the spokes of the web without piercing the fabric except for at the beginning and at the end of your weaving.



At first pull the ribbon snugly to the centre. Then, as you are weaving your ribbon over and under the spokes, let it twist and fold naturally and don't pull all the way through. This will give a soft organic look to your rose. Pull the thread gently, so that the ribbon lies in three dimensional folds beside the previous rounds. When you think the spokes are full enough, bring the needle to the back of the fabric and end off.

3. BUDS: Japanese Ribbon Stitch: Work Japanese Ribbon Stitch leaves with 1 18" length of Gloriana 4mm silk ribbon #091 "Raspberry Parfait". Come up at the base of the bud at **A** and make sure that the ribbon lies flat against the fabric and in the direction that you want it to go. Place your thumbnail up against the shaft of the needle and on top of the ribbon, holding it down as you pull the ribbon through to create the stitch. Determine the length of the stitch you want, (4 or 5 fabric threads) and bring the needle down at **B**, piercing through the ribbon. When you pull the needle and ribbon through, pull it through slowly and gently, until the end of the ribbon begins to curl.



4. LEAVES: Using 2 strands of Kreinik #4 Braid #002 metallic gold work Lazy Daisy leaves.

5. CHARM: Attach Cupid charm with 1 strand of Kreinik #4 Braid #002 metallic gold shown on Main Chart as an X.

FINISHING SUGGESTIONS: Ornament: cut two pieces of matboard about 1/8" larger than stitched design. Glue quilt batting on each, let dry and trim. Center the design over batting and anchor with straight pins. Clip curving corners, glue raw edges on back. Repeat on other matboard using a fabric of your choice. Glue both pieces wrong sides together. Glue cording around outside edges to finish off. **Sachet:** fashion into pillow or bag and stuff with lavender or potpourri. Add ribbons to tie! **Frame:** use 4" x 4" frame opening. **Greeting Card:** apply a piece of iron-on interfacing to the back, trim the fabric to size and insert. **Pincushion:** use container, stuff, glue design over top or form into pillow and stuff.